

For Lease 16,511 Sq. Ft. Professional Class A Office
1133 Minnesota Avenue, San Jose, CA 95125
www.1133minnesota.com

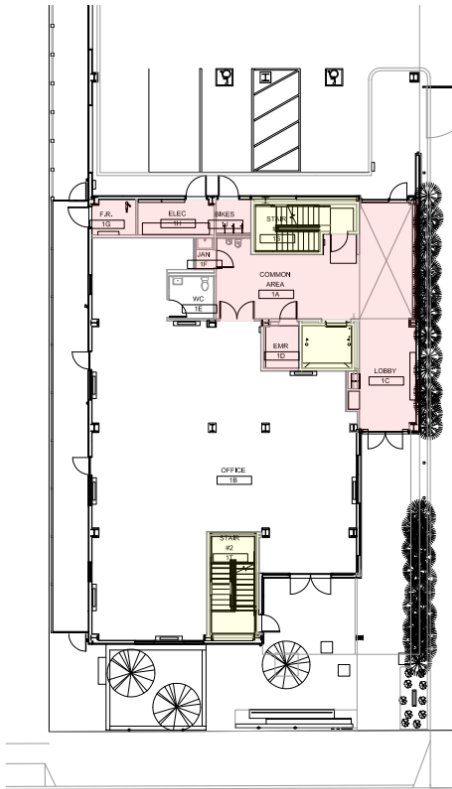


- 16,511 SQ FT brand new construction Class A office space
- Just steps to downtown Willow Glen
- Walk to multiple restaurants, bars and coffee shops
- Private and off-street parking
- Adjacent large 3-hour public parking lot
- Ideal corporate headquarters
- Designed for next-gen professional office use
- Full floor/full building opportunities
- Elevator served
- Energy code compliant
- Abundant natural light
- Building signage possible
- High-end finishes
- Stunning 2 story atrium
- Private entrances for 1st floor tenants
- Multiple private balconies
- Secure bicycle parking
- \$5.00 per SQ. FT. Full Service
- Available for lease September 2020

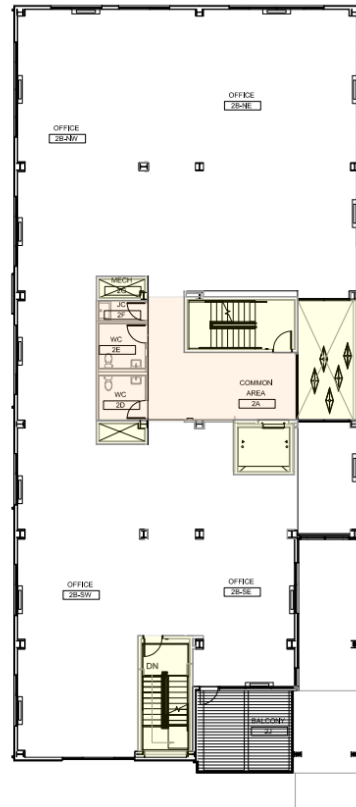
For Lease 16,511 Sq. Ft. Professional Class A Office
1133 Minnesota Avenue, San Jose, CA 95125
www.1133minnesota.com



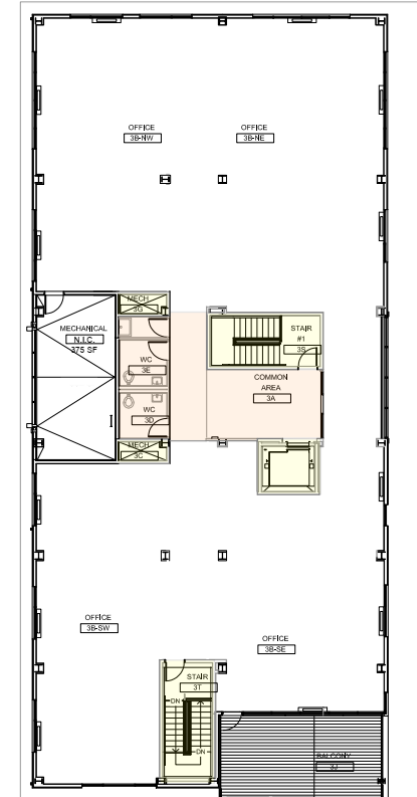
Floor Plans



- 2498 square feet leasable space
- Ideal for single tenant
- Separate entrance for first floor
- 2 Story Atrium



- 6120 square feet leasable space
- Ideal for single or multiple tenants
- 229 Square Feet Balcony

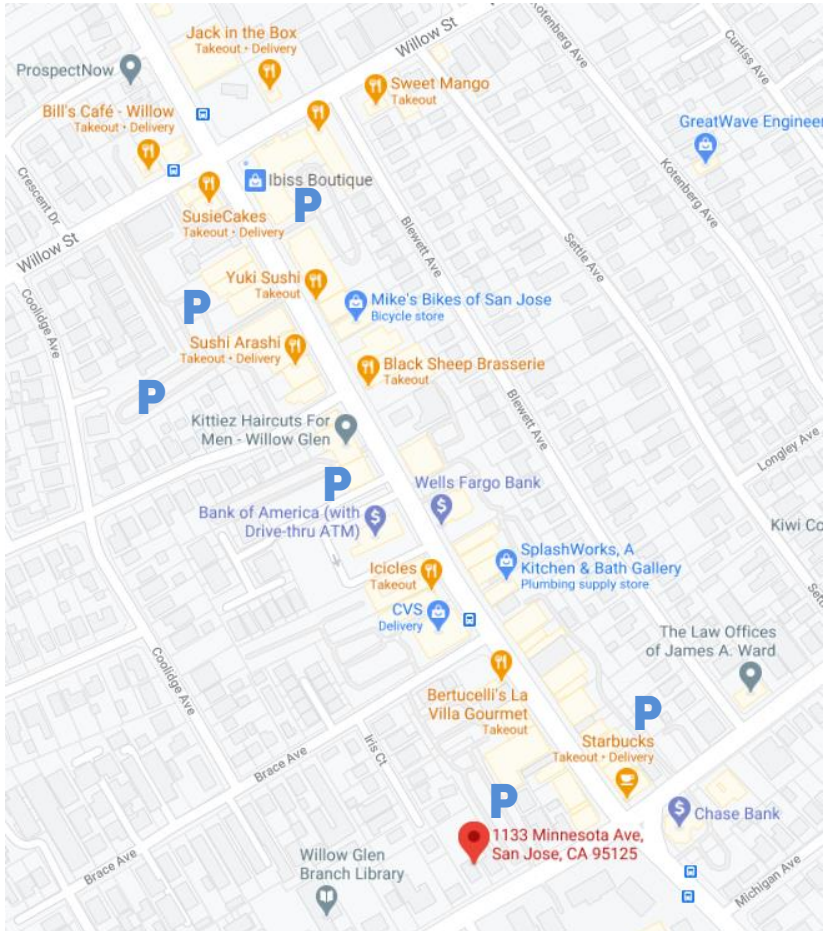


- 6216 square feet leasable space
- Ideal for single or multiple tenants
- Large 374 Square Feet Balcony

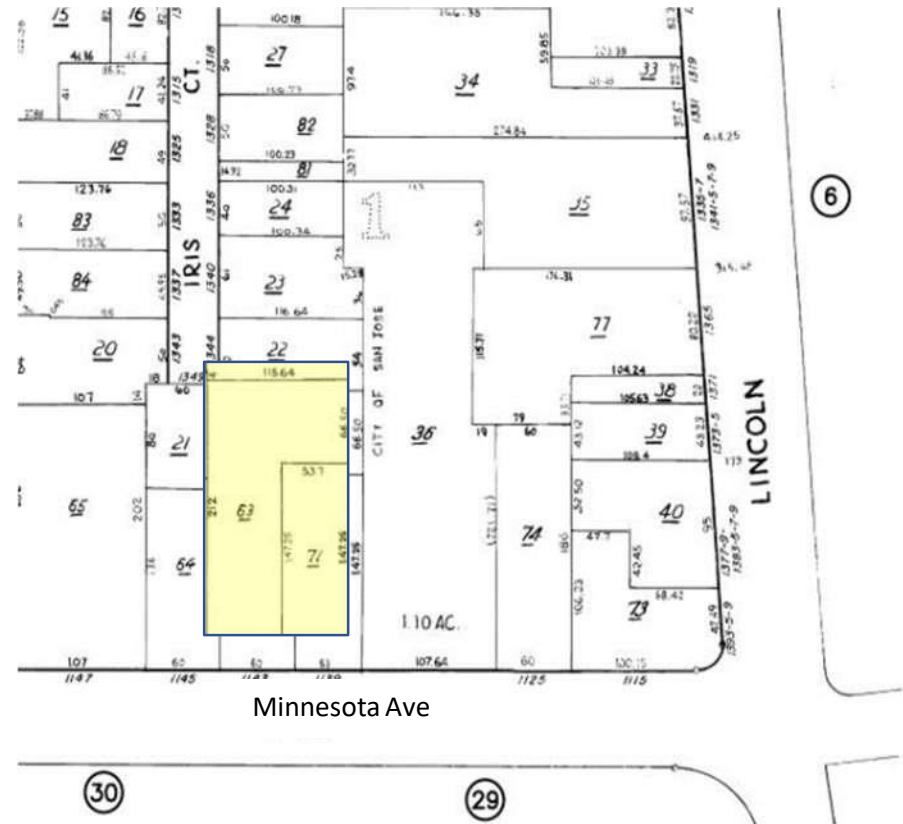
For Lease 16,511 Sq. Ft. Professional Class A Office
1133 Minnesota Avenue, San Jose, CA 95125
www.1133minnesota.com



Area Map
Downtown Willow Glen



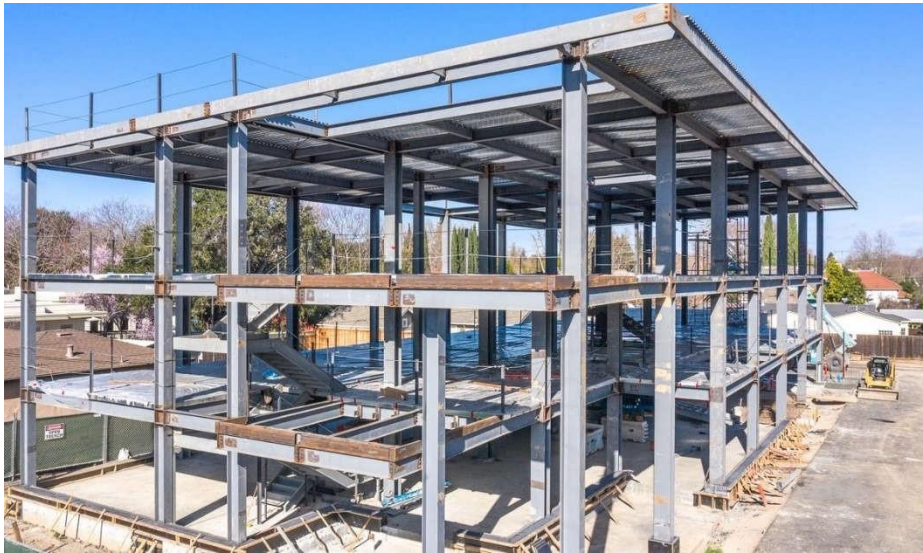
Plat Map



For Lease 16,511 Sq. Ft. Professional Class A Office
1133 Minnesota Avenue, San Jose, CA 95125
www.1133minnesota.com



Completion Scheduled September 2020



View and Download Elevations & Floorplans at

<https://www.1133minnesota.com/downloads>